

You Don't Know What Love Is

Piano

Changes a la Chet Baker ('55) / John Coltrane ('62)

Lyric: Don Raye

Music: Gene DePaul

Am^{6/9} 1941F¹³

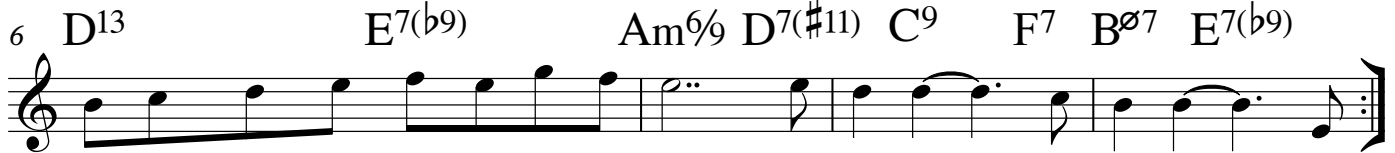
Ballad

A Am^{6/9} F⁹ E7(^b₅) Am^{6/9} B^b7(^b₅) F¹³



You don't know what love is, — unt - til you've learned the mea - ning of the blues. Un -
don't know what how lips hurt un - til you've kissed and had to pay the cost, Un -

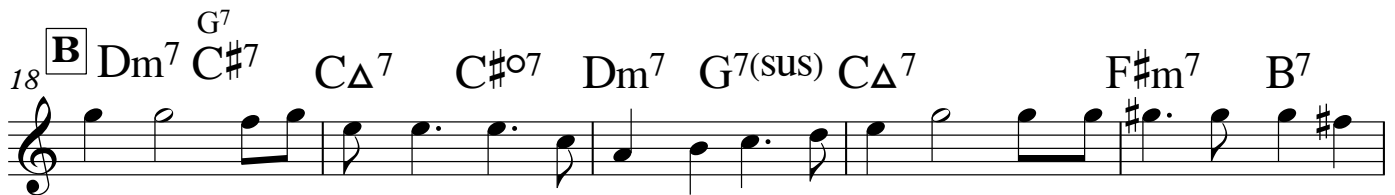
B^ø7 E7(^b₉) F¹³ E7(^b₉)



6 D¹³ E7(^b₉) Am^{6/9} D7([#]₁₁) C⁹ F⁷ B^ø7 E7(^b₉)
til you've loved a love you had to lose, you don't know what love is. — You
til you've flipped your heart and you have lost, you



12. B^ø7 E7(^b₉) Am^{6/9}
don't know waht love is. — Do



18 **B** Dm⁷ C^{#7} C^Δ7 C^{#o}7 Dm⁷ G^{7(sus)} C^Δ7 F^{#m}7 B⁷
you know how a lost heart fears ththought of rem - i - nisc - ing? And how lips that taste of



23 E^Δ7 F⁹ B^ø7 E7(^b₉) **A** Am^{6/9}
tears lose their taste for kiss - ing. — You don't know — how

F⁹ E7(^b₅) Am^{6/9} F¹³



27 B^{7(b}₉) E7(^b₅) Am B^b7(^b₅) F¹³
hearts burn, — for love that can - not live but nev - er die, un -

B^ø7 E7(^b₉) F⁹ E7(^b₅)



30 D¹³ E7(^b₉) Am^{6/9} D7([#]₁₁) B^{7(b}₉) E7(^b₁₃) Am^{6/9}
til you've faced each dawn with sleep-less eyes, you don't know what love - is.